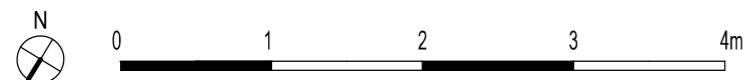
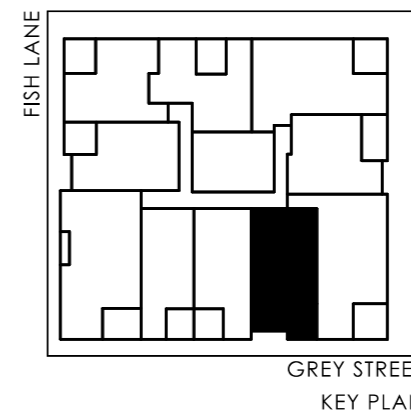


GREY STREET + FISH LANE TOWER



THE INFORMATION CONTAINED ON THIS PLAN/SCHEDULE IS BELIEVED TO BE CORRECT, BUT IS NOT GUARANTEED. DIMENSIONS AND AREAS ARE SUBJECT TO CHANGE WITHOUT NOTICE. PROSPECTIVE PURCHASERS MUST RELY ON THEIR OWN ENQUIRIES AND SHOULD REFER TO THE PLANS, TERMS AND CONDITIONS CONTAINED IN THE CONTRACT OF SALE. ROTHE LOWMAN AND ARIA PROPERTY GROUP DO NOT TAKE RESPONSIBILITY FOR THE USE OF THIS MATERIAL BY OTHERS.

- UNIT 7.04
- UNIT 8.04
- UNIT 9.04
- UNIT 10.04
- UNIT 11.04
- UNIT 12.04
- UNIT 13.04
- UNIT 14.04
- UNIT 15.04
- UNIT 16.04
- UNIT 17.04
- UNIT 18.04
- UNIT 19.04
- UNIT 20.04



- BEDROOMS 1
- BATHROOMS 1
- STUDY 1
- CAR PARK 1

TOTAL AREA 64 m² approx.
TERRACE 8 m² approx.
INTERNAL 56 m² approx.

GREY STREET
KEY PLAN